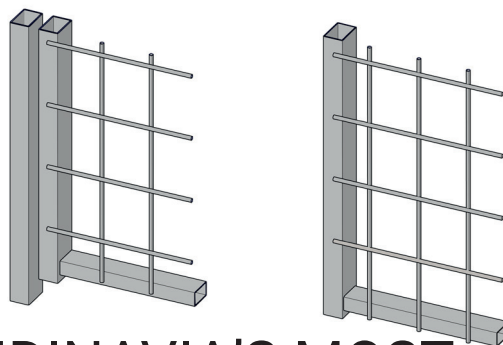


Product information

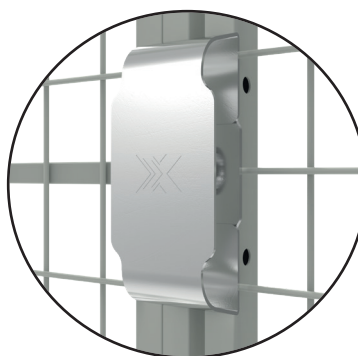
» Storeroom wall type FK



STOREROOM WALL FK · SCANDINAVIA'S MOST POPULAR

It is in the details that quality comes to the fore. Our FK storeroom system has a heavy duty tubular design for both its doors and walls, which makes the system secure and stable. Try combining FK with partitions from our F-system, the results are often really impressive.

When you set high demands on safety and stability



Did you know that ...

- With extra robust tubular construction in both doors and walls.
- Can be combined with F and FP.
- Can be cut to suit existing construction.
- We have the ability to build topsection/ roof
- The walls are painted in RAL 9018.
- Accessories, see homepage.

Storeroom wall F, FK+ and FP is available as an option, if you wish, contact customer support for update offer!

All our systems can be combined!

PRODUCT DESCRIPTION – FK

Material & design	Dimensions (mm)
Tubular steel frame, wall	
Vertical tubes	30x20
Horizontal tubes	25x15
Tubular steel frame, door	
Vertical tubes	30x20
Horizontal tubes	35x15
Steel mesh	
Vertical wires	Ø 4.0
Horizontal wires	Ø 4.0
Dimensions	50x65
Door opening dimensions	
40-4225750(1)	2000x710
40-4225900(1)	2000x860

* Alternative locking solution

(1) = Right/left

(2) = Right + cover

(3) = Left + coverp

(4) = Fitted for Assa 310/410

(5) = X-It, right

(6) = X-It, left