

Axelent Product Information

» Crash Barrier



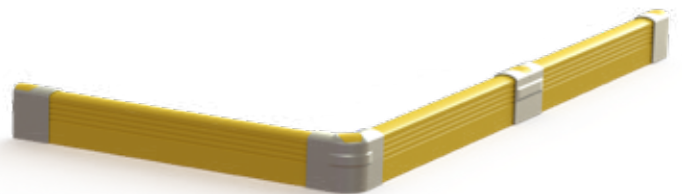
Crash Barrier

Engineered from solid ductile iron and maintenance-free polypropylene, our Crash Barrier ensures heavy equipment doesn't stand a chance of damaging your walls or facility.

Crash Barrier is also ideal for creating traffic lanes, framing off areas protecting columns and separating moving equipment from people.

Crash Barrier

- All-angle Protection - Absorbs direct impacts, deflects glancing blows
- Zero Maintenance - Install it once, get peace of mind for years
- High Visibility - Your best defense is being seen



Crash Barrier End

Materials: Ductile Iron end & cap, rubber damper, anchor kit

Crash Barrier Mid

Materials: Ductile Iron mid & cap, rubber damper, anchor kit

Crash Barrier Corner

Materials: Ductile Iron corner & cap, rubber damper, anchor kit

Crash Barrier Post End

Materials: Ductile Iron post end & cap, rubber damper, anchor kit

Barrier

Material: Polyolefin, 10' (3 m) length